

1. Nicht allein!

Kontrabass

Antoinette Lümann

Christian Domke

Fröhlich ♩ = 132



7



13



18



23



29



35



41



45

rit.



3. Lied der Mutter

Kontrabass

Antoinette Lümann

Christian Domke

Ballade ♩ = 72
4

Measures 1-5: Bass clef, 4/4 time signature. Measure 1 is a whole rest. Measures 2-5 contain quarter notes with stems up, followed by a quarter note with stem down. The word *pizz.* is written below the staff.

10

Measures 6-9: Bass clef, 4/4 time signature. Measures 6-7 contain eighth notes with stems up, followed by quarter notes with stems down. Measures 8-9 contain quarter notes with stems down. The word *arco* is written below the staff.

16

Measures 10-15: Bass clef, 4/4 time signature. Measures 10-11 contain quarter notes with stems up. Measures 12-15 contain quarter notes with stems down. A circled crosshair symbol is positioned above measure 13. The word *pizz.* is written below the staff.

22

Measures 16-21: Bass clef, 4/4 time signature. Measures 16-21 contain quarter notes with stems up, all under a single slur. The word *espressivo* is written above the staff, and *arco* is written below the staff.

28

Measures 22-27: Bass clef, 4/4 time signature. Measures 22-23 contain quarter notes with stems up, under a slur. Measures 24-27 contain quarter notes with stems down, under a slur.

34

Measures 28-33: Bass clef, 4/4 time signature. Measures 28-33 contain quarter notes with stems down. A circled crosshair symbol is positioned above measure 32. The word *pizz.* is written below the staff, and *arco* is written below the staff.

40

Measures 34-39: Bass clef, 4/4 time signature. Measures 34-39 contain quarter notes with stems down. The word *pizz.* is written below the staff, and *arco* is written below the staff.

5. Schutzengellied

Kontrabass

Antoinette Lühmann

Christian Domke

Drängend, aber nicht zu schnell ♩ = 96

7. Räuberlied

Kontrabass

Antoinette Lümann

Christian Domke

Bewegt und frech ♩ = 112

pizz. *l.v.*

6

11

15

Fine *l.v.*

19

23

l.v. ⊕

9. Gewarnt

Kontrabass

Antoinette Lümann

Christian Domke

8 **Etwas aufgeregt** ♩ = 90

p e dolce

13 **rit.**

rit.

19 **Nachdenklich** ♩ = 75

Nachdenklich ♩ = 75

25 **Adagio** ♩ = 60

Adagio ♩ = 60

pp

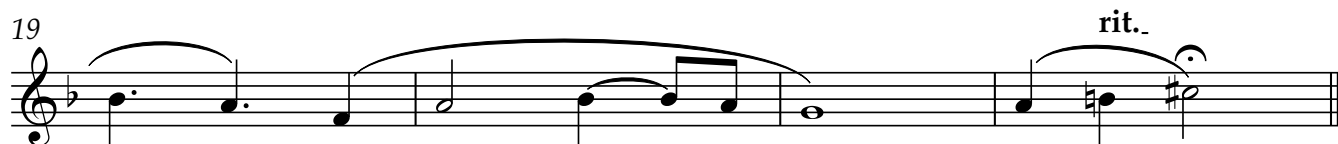
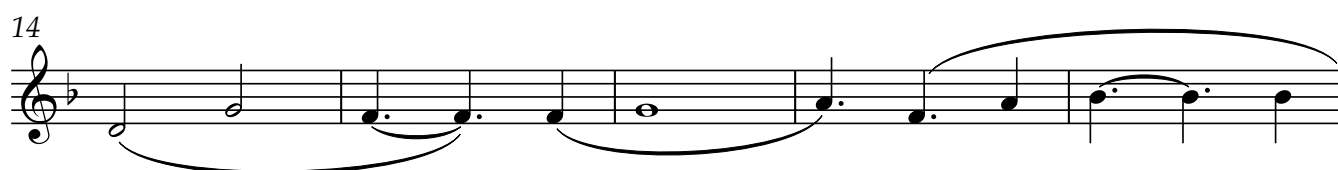
11. Verzweiflungslied

Kontrabass

Antoinette Lühmann

Christian Domke

Nachdenklich, aber bestimmt ♩ ca. 80



12. Gottes Engel

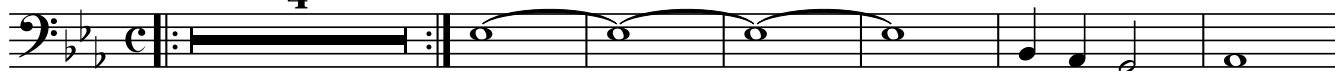
Kontrabass

Antoinette Lühmann

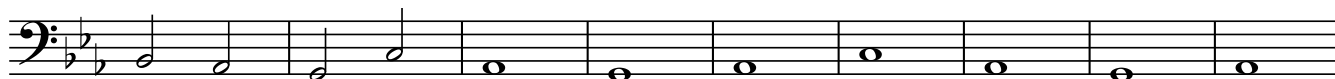
Christian Domke

Ruhig und zärtlich ♩ = 80 oder langsamer

4



11



20



29

rit. . . .



14. Lied der Kinder

Kontrabass

Antoinette Lühmann

Christian Domke

Rockig ♩ = 92

f

6

pizz.

arco (Wdh.)

3

1. Fine

12

pizz.

17

pizz.

16. Abschlusslied {Reprise}

Kontrabass

Antoinette Lümann

Christian Domke

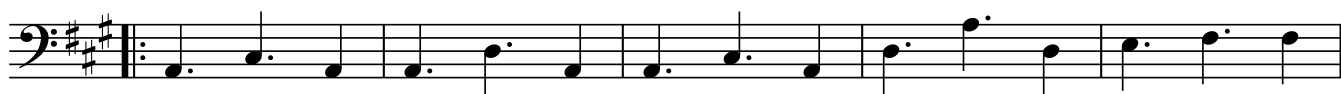
Fröhlich ♩ = 132



7



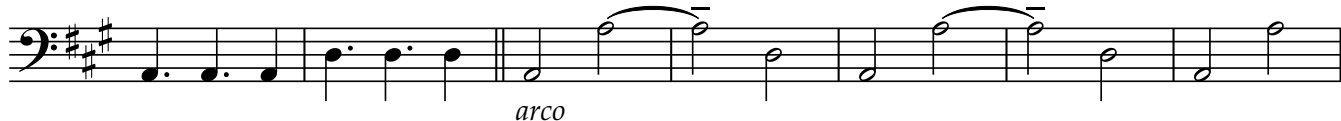
13



18



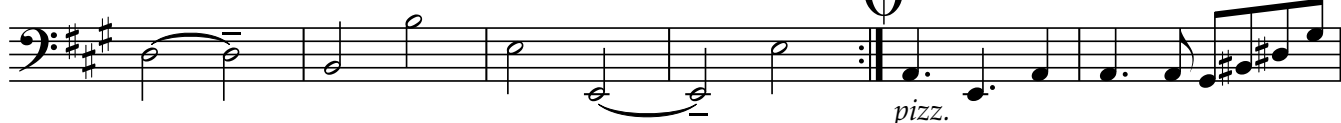
23



30



37



poco rit.

43



51



59

Tempo I



65



70

